

PRODUCT CATALOG



Contact

ADDRESS : 700-20, Manse-ro, Yangseong-myeon,
Anseong-si, Gyeonggi-do, Republic of Korea, 17502
H P : +82) 010-8777-5735
TEL / FAX : +82) 031-676-9212 / 031-672-9212
WEB SITE : www.manpatools.com
CONTACT : info@manpatools.com



Carving Tool

You can carve any wood efficiently even if hard and can work safe with various.



Grooving Tool

More faster, More better You can work by using Professional Grooving Tool.



Sanding Tool

Use those sanding Tools, You can sand easy and get Satisfactory finishing work.



Safety tool

By using Safety tool, You can prevent safety accident and feel comfortable.

BELT CUTTER

Note : Angle grinder is not included.

- Power Carving Performance
- Smooth Carving with Sharp Carbide 6 mm
- **Smallest Wheel 45mm**
- **Only 2" Wheel Change Available**
- Free Angle Change 90 - 180°
- Two Hand Grip – Kick Back Control
- Vibration Reduction
- Extension System (200, 270, 348mm) - option



Model : MP21-2-M, MP21-2-B, MP21-2-H

Max. Blade Diameter : 45 mm

Max. Working Depth : 10 mm @ 2" Wheel

Max. RPM : 16,500 rpm @ Extension spindle

Disc Bore Size : 9.5 mm

Blade Width : 6 mm

Number of Teeth : 3 EA @ 2" Wheel

Detail & Sculpting

Narrow Area Working

Power Carving

Sanding

Usage



Spoon, Bowl, Sculpting, Detail carving etc



Angle Change System
(90° - 180°)



Extension System
(200, 270, 348 mm)



Only 2" Wheel Change



Housing Change
(43mm – 75mm)



Sanding System
(Rough & Finish)

Belt Cutter is the ultimate carving tool with smallest wheel.

It is designed for carving inside and small shape like Spoon, Letter carving, Texturing and Detail carving.



Belt Cutter – Master Kit
(MP21-2-M)

- Belt Cutter & 2" Circular Wheel 6mm
- **270, 348 Extension Bar (Included)**



Belt Cutter – Basic Kit
(MP21-2-B)

- Belt Cutter & 2" Circular Wheel 6mm



Belt Cutter Housing
(MP21-2-H)

- Belt Cutter Housing
- Housing Change System to Multi Cutter

MULTI CUTTER

Note : Angle grinder is not included.

- Power Carving Performance
- Smooth Carving with Sharp Carbide 8 mm
- Basic Wheel 70mm
- Various Wheel Change (3" & 4" Disc), Housing Change (2")
- Free Angle Change 90 - 180°
- Two Hand Grip – Kick Back Control
- Vibration Reduction
- Extension System (200, 270, 348mm) - option



Model : MP21-3-M, MP21-3-B, MP21-3-NB
Max. Blade Diameter : 100 mm @ 4" wheel
Max. Working Depth : 35 mm @ 4" Wheel
Max. RPM : 15,000 rpm @ Extension spindle
Disc Bore Size : 16.03 mm
Blade Width : 8 mm
Number of Teeth : 3 EA @ 3" Wheel

Detail & Sculpting	██
Narrow Area Working	██████████████████████████████████████
Power Carving	██
Sanding	██
Usage	Spoon, Bowl, Sculpting, Detail, Chainsaw etc



Angle Change System
(90° - 180°)

Extension System
(200, 270, 348 mm)

Various Wheel Change
(3", 4" Wheel)

Housing Change
(43mm – 75mm)

Sanding System
(Rough & Finish)

Multi Cutter is the ultimate carving tool with various wheel (triangle, square, 2" housing etc). It is designed for carving fast inside & outside both with easy control & safe.



Multi Cutter – Master Kit
(MP21-3-M)

- Multi Cutter & 3" Circular Wheel 8mm
- 4" Circular Wheel 8mm (Included)
- 270, 348 Extension bar (Included)



Multi Cutter – Basic Kit
(MP21-3-B)

- Multi Cutter & 3" Circular Wheel 8mm



Multi Cutter – Bare Tool
(MP21-3-NB)

- Multi Cutter (No Wheel included)



3" Circular Cutter 12mm

- Round Shape Carbide
- Power Carving Performance
- Only fit to Multi Cutter Version

Detail & Sculpting	
Power Carving	
Texture	
Shape	Round Type
Usage	Power Carving

Model : 3" Circular Cutter 12mm (MP21-3-12)
Max. Blade Diameter : 70 mm
Max. Working Depth : 20 mm
Max. RPM : 15,000 rpm
Disc Bore Size : 16.03 mm
Blade Width : 12 mm
Number of Teeth : 3 EA



3" Triangle Cutter

- Triangle Shape Carbide (V Grooving)
- Chainsaw & Bonsai Texture
- Only fit to Multi Cutter Version

Detail & Sculpting	
Power Carving	
Texture	
Shape	Triangle Type
Usage	Chainsaw, Bonsai

Model : 3" Triangle Cutter (MP21-6)
Max. Blade Diameter : 70 mm
Max. Working Depth : 20 mm
Max. RPM : 15,000 rpm
Disc Bore Size : 16.03 mm
Blade Width : 1 - 10 mm
Number of Teeth : 3 EA



3" Square Cutter

- Square Shape Carbide (□ Grooving)
- Square Groove & Tenon Joints
- Only fit to Multi Cutter Version

Detail & Sculpting	
Power Carving	
Texture	
Shape	Square Type
Usage	Tenon joints

Model : 3" Square Cutter (MP21-5-3)
Max. Blade Diameter : 70 mm
Max. Working Depth : 20 mm
Max. RPM : 15,000 rpm
Disc Bore Size : 16.03 mm
Blade Width : 10 mm
Number of Teeth : 3 EA



4" Circular Cutter 8mm

- 8mm Sharp Carbide
- 95mm Wide Diameter
- Power Carving Performance

Detail & Sculpting	
Power Carving	
Texture	
Shape	Round Type
Usage	Power Carving

Model : 4" Circular Cutter 8mm (MP21-4-8)
Max. Blade Diameter : 95 mm
Max. Working Depth : 35 mm @ Multi Cutter
Max. RPM : 15,000 rpm
Disc Bore Size : M10, M14, 5/8"-11 (option)
Blade Width : 8 mm
Number of Teeth : 4 EA

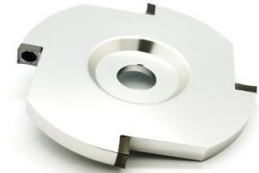


4" Circular Cutter 12mm

- 12mm Sharp Carbide
- 95mm Wide Diameter
- Extreme Power Carving Performance

Detail & Sculpting	
Power Carving	
Texture	
Shape	Round Type
Usage	Removing Bark

Model : 4" Circular Cutter 12mm (MP21-4-12)
Max. Blade Diameter : 95 mm
Max. Working Depth : 35 mm @ Multi Cutter
Max. RPM : 15,000 rpm
Disc Bore Size : M10, M14, 5/8"-11 (option)
Blade Width : 12 mm
Number of Teeth : 4 EA



4" Square Cutter

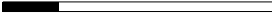



- Square Shape Carbide (□ Grooving)
- Square Groove & Tenon Joints

Detail & Sculpting	
Power Carving	
Texture	
Shape	Square Type
Usage	Tenon joints

Model : 4" Square Cutter (MP21-5-4)
Max. Blade Diameter : 95 mm
Max. Working Depth : 35 mm @ Multi Cutter
Max. RPM : 15,000 rpm
Disc Bore Size : M10, M14, 5/8"-11
Blade Width : 10 mm
Number of Teeth : 4 EA

Holes Cutter

- Power Gouging Performance
- Smooth Gouging with Sharp Carbide (Round Type)
- Extension Performance with Sanding Tool (Sold Separately)
- More Tough & Safety Work with Grinder Holder (Sold Separately)
- Two Hand Grip – Kick Back Control

Detail & Sculpting	
Narrow Area Working	
Power Gouging	
Extension	
Usage	Beehive, Wooden Pockets, Bowl etc



Holes Cutter is the ultimate gouging tool. It is designed for gouging wood inside like Bowl, Pocket, Beehive etc.



Tough & Safety Work

Extension System
(+120, +240 mm)

Guide Plate System



2" Holes Cutter
(MP21-8-2)

- 2" Holes Cutter
- Round Shape Carbide 8mm

Model : 2" Holes Cutter (MP21-8-2)
Max. Blade Diameter : 45 mm
Max. Gouge Depth : 110 mm
Max. RPM : 15,000 rpm
Disc Bore Size : M10, M14, 5/8"-11(option)
Blade Width : 8 mm
Number of Teeth : 3 EA



3" Holes Cutter
(MP21-8-3)

- 3" Holes Cutter
- Round Shape Carbide 8mm

Model : 3" Holes Cutter (MP21-8-3)
Max. Blade Diameter : 60 mm
Max. Gouge Depth : 140 mm
Max. RPM : 15,000 rpm
Disc Bore Size : M10, M14, 5/8"-11(option)
Blade Width : 8 mm
Number of Teeth : 3 EA



4" Holes Cutter
(MP21-8-4)

- 4" Holes Cutter
- Round Shape Carbide 12mm
- Recommended 7" angle grinder

Model : 4" Holes Cutter (MP21-8-4)
Max. Blade Diameter : 80 mm
Max. Gouge Depth : 160 mm
Max. RPM : 15,000 rpm
Disc Bore Size : M10, M14, 5/8"-11(option)
Blade Width : 12 mm
Number of Teeth : 3 EA



Mini Crack Cutter

- Round Shape Carbide 6mm
- Small Gouging Performance
- Spoon, Bonsai, Chainsaw, Texture

Detail & Sculpting	
Power Gouging	
Texture	
Shape	Round Type
Usage	Narrow Area

Model : Mini Crack Cutter (MP21-16-M)
Max. Blade Diameter : 12.20 mm
Max. Gouge Depth : 100 mm
Max. RPM : 15,000 rpm
Disc Bore Size : M10, M14, 5/8"-11(option)
Blade Width : 6 mm
Number of Teeth : 2 EA



Crack Cutter

- Round Shape Carbide 8mm
- Power small gouging Performance
- Spoon, Bonsai, Chainsaw, Texture

Detail & Sculpting	
Power Gouging	
Texture	
Shape	Round Type
Usage	Narrow & Tough

Model : Crack Cutter (MP21-16)
Max. Blade Diameter : 20 mm
Max. Gouge Depth : 100 mm
Max. RPM : 15,000 rpm
Disc Bore Size : M10, M14, 5/8"-11(option)
Blade Width : 8 mm
Number of Teeth : 2 EA



Projecting Cutter

- Round Shape Carbide 8mm
- Oldest version of Gouging tool
- Bowl, Planning, Texture

Detail & Sculpting	
Power Gouging	
Texture	
Shape	Square Type
Usage	Tenon joints

Model : Projecting Cutter (MP21-7)
Max. Blade Diameter : 60 mm
Max. Gouge Depth : 60 mm
Max. RPM : 15,000 rpm
Disc Bore Size : M10, M14, 5/8"-11(option)
Blade Width : 8 mm
Number of Teeth : 3 EA



Sanding Tool

- Various Extensions Use
Holes Cutter & Sanding Flex
- Adapter is not included

Narrow Area Working	
Power Gouging & Sanding	
Extension	
Length	120mm
Usage	Extension

Model : Sanding Tool (MP21-12)
Max. Depth : 140 mm @ all spindle length
Max. Grooving RPM : 15,000 rpm
Max. Sanding RPM : 8,000 rpm
Disc Bore Size : Adapter Not included
Working Width : 120 mm @ No spindle
Purpose : Extension, Sanding



Grinder Holder

- Vibration Reduction
- 7 Handle Position
- Tough & Safety Performance

Vibration Reduction	
Power Carving & Gouging	
Safety	
Shape	-
Usage	Safety

Model : Grinder Holder (MP21-9)
Purpose : Safety



Belt Sander

- Power Sanding Performance – Flat, Corners and Radii Shape
- High Quality Sanding Paper #40, #100
- Detail & Sculpting
- Two Hands Grip – Kick Back Control

Model : Belt Sander (MP21-14)

Max. Diameter : 30 mm

Max Length : 300 mm

Max. RPM : 26,400 rpm @extension Spindle

Disc Bore Size : M10, M14, 5/8"-11(option)

Sandpaper Width : 30 mm

Sandpaper Hardness : #40, #100

Note : Angle grinder is not included.



Detail & Sculpting



Narrow Area Working



Power Sanding



Usage



Rustic Sanding



4" Sanding Wheel (MP21-17-4)

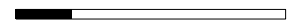
- 100mm Wide Diameter
- Special Adapter & Wrench Included
- Long-lasting Tungsten Carbide
- Round Shape Type



Detail & Sculpting



Narrow Area Sanding



Power Sanding



Extension



Usage

Outside Round Sanding



4" Sanding Disc (MP21-22)

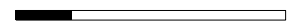
- 100mm Wide Diameter
- Special Adapter & Wrench Included
- Long-lasting Tungsten Carbide
- Flat Shape Type



Detail & Sculpting



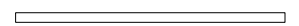
Narrow Area Sanding



Power Sanding



Extension



Usage

Outside Flat Sanding



2" Sanding Wheel (MP21-17-2)

- 50mm Small Diameter for sanding Inside
- Only fit to Multi Cutter Version
- Long-lasting Tungsten Carbide
- Round Shape Type



Detail & Sculpting



Narrow Area Sanding



Power Sanding



Extension



Usage

Inside Round Sanding



Sanding Shaft (MP21-18)

- 18.5mm Shaft designed for Narrow area
- Special Adapter & Extension Included
- Long-lasting Tungsten Carbide
- Shaft Shape Type



Detail & Sculpting



Narrow Area Sanding



Power Sanding



Extension



Usage

Narrow Area Sanding



Sanding Ball (MP21-23)

- 32mm Wide Diameter
- Special Adapter Included
- Long-lasting Tungsten Carbide
- Ball Shape Type



Detail & Sculpting



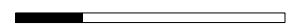
Narrow Area Sanding



Power Sanding



Extension



Usage

Spoon, Bowl Sanding



Assistant Tool 1

- Two Type of Sanding use Sand Paper & Flap Paper
- Perfect finish sanding inside areas
- Speed down to RPM 8000

Finish Sanding	
Narrow Area	
Flexibility	
Type	Sand, Flap Paper
Usage	Inside Area

Model : Assistant Tool 1 (MP21-13-1)

Max. Depth : 150 mm

Max. Sanding RPM : 8,000 rpm



Assistant Tool 2

- Two Type of Sanding use Flap & Rolling
- Perfect finish sanding Narrow areas
- Speed down to RPM 8000

Finish Sanding	
Narrow Area	
Flexibility	
Type	Sand, Flap Paper
Usage	Narrow Area

Model : Assistant Tool 2 (MP21-13-2)

Max. Depth : 150 mm

Max. Sanding RPM : 8,000 rpm



Sanding Flex

- Various Size : 2", 3", 4"
- Flexible Pad works on Objects
- Speed down to RPM 8000
Cushion Pad Recommended

Finish Sanding	
Narrow Area	
Flexibility	
Type	Velcro
Usage	Sanding

Model : Sanding Flex (MP21-19)

Standard Size : 2", 3", 4"

Max. Sanding RPM : 8,000 rpm



Quick Vise

- Securely Fix Objects
- Sliding Board and Quick Grip
- 650mm Wide Working Area

Vibration Reduction	
Power Carving & Gouging	
Safety	
Shape	-
Usage	Safety

Model : Quick Vise (MP21-20)

Max. Clamping Length : 600 mm

Max. Clamping Depth :-

Max. RPM :-

Disc Bore Size :-

Working width : 600 mm

Purpose : Safety



Rotary Burrs

- 6 Different Type Shape
- 1/8" Shank
- Long-lasting Tungsten Carbide Coating

Detail & Sculpting	
Power Carving	
Texture	
Shape	6 Different Type
Usage	Texture, Detail

Model : Rotary Burrs (MP21-21-H)

Max. Blade Diameter :-

Max. Carving Depth :-

Max. RPM : 25,000 RPM

Disc Bore Size : 1/8" Shank

Working Width :-

Purpose : Texture, Detail



Carving Burrs

- 2 Different Type Shape
- 2 Shank Type – 1/8" , 1/4"
- Replaceable Tungsten Carbide Cutter

Detail & Sculpting	
Power Carving	
Texture	
Shape	2 Different Type
Usage	Texture, Detail

Model : Carving Burrs (MP21-24)

Max. Blade Diameter :-

Max. Carving Depth :-

Max. RPM : 25,000 RPM

Disc Bore Size : 1/8" , 1/4" Shank

Working Width :-

Purpose : Texture, Detail